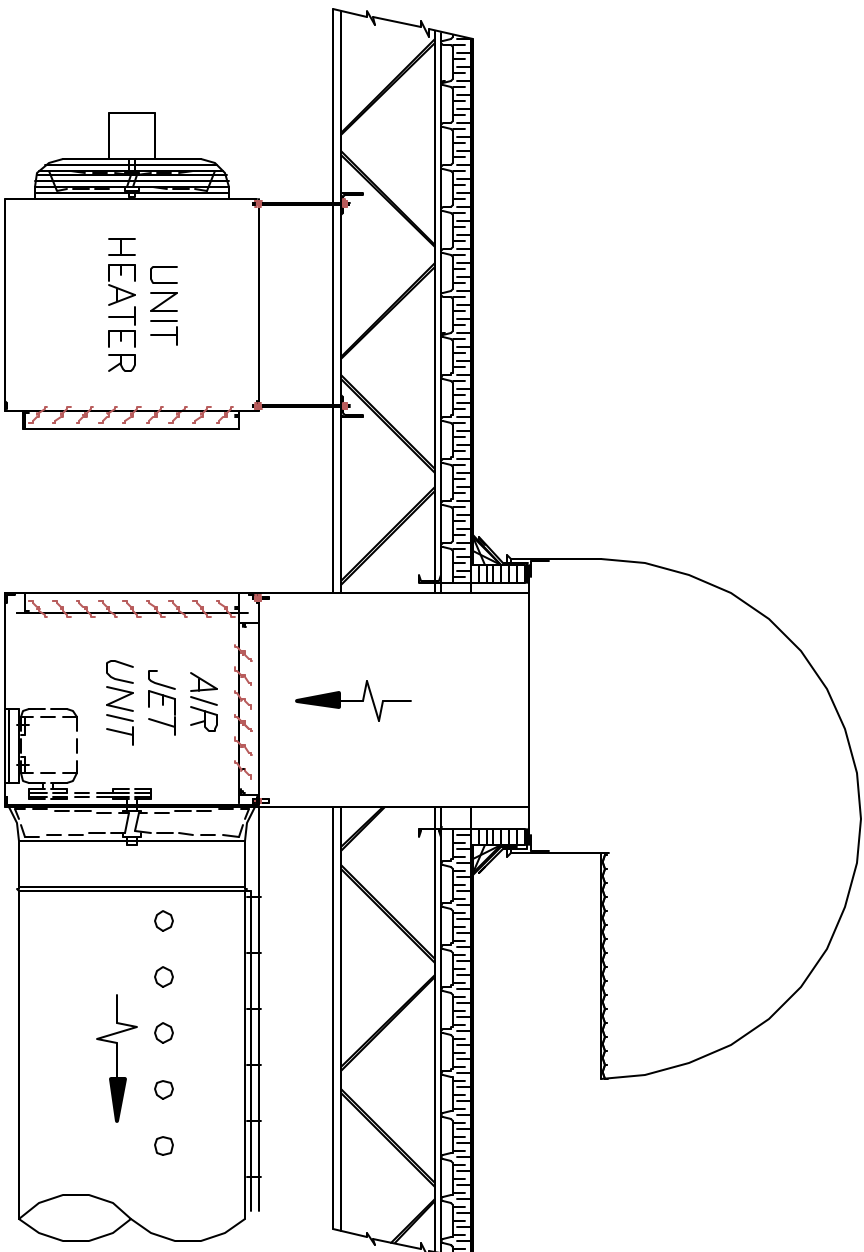


SUPPLEMENTAL HEAT



SUPPLEMENTAL HEAT, IF REQUIRED CAN EASILY BE INCORPORATED BY SIMPLY ADDING ADDITIONAL GAS OR ELECTRIC UNIT HEATERS IN CLOSE PROXIMITY TO THE RETURN AIR (RECIRCULATION) DAMPER